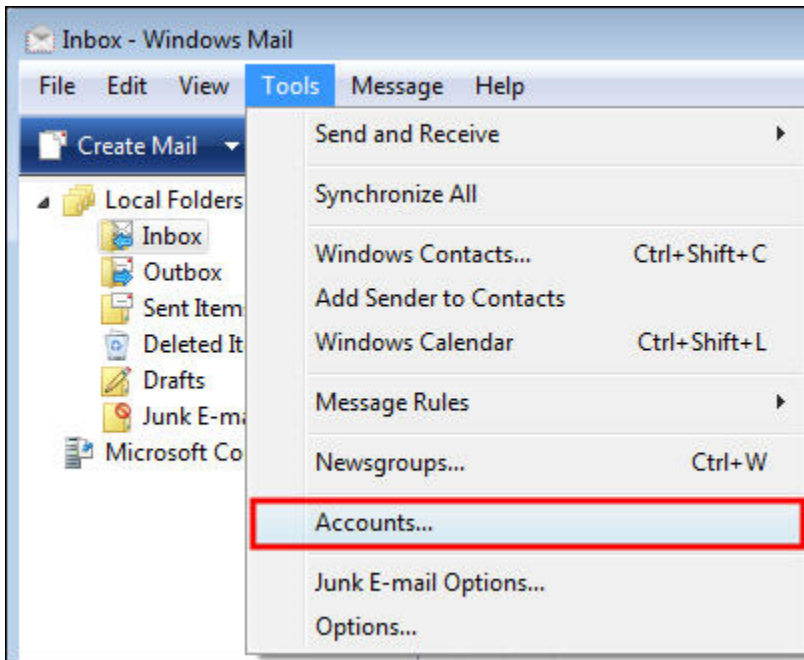
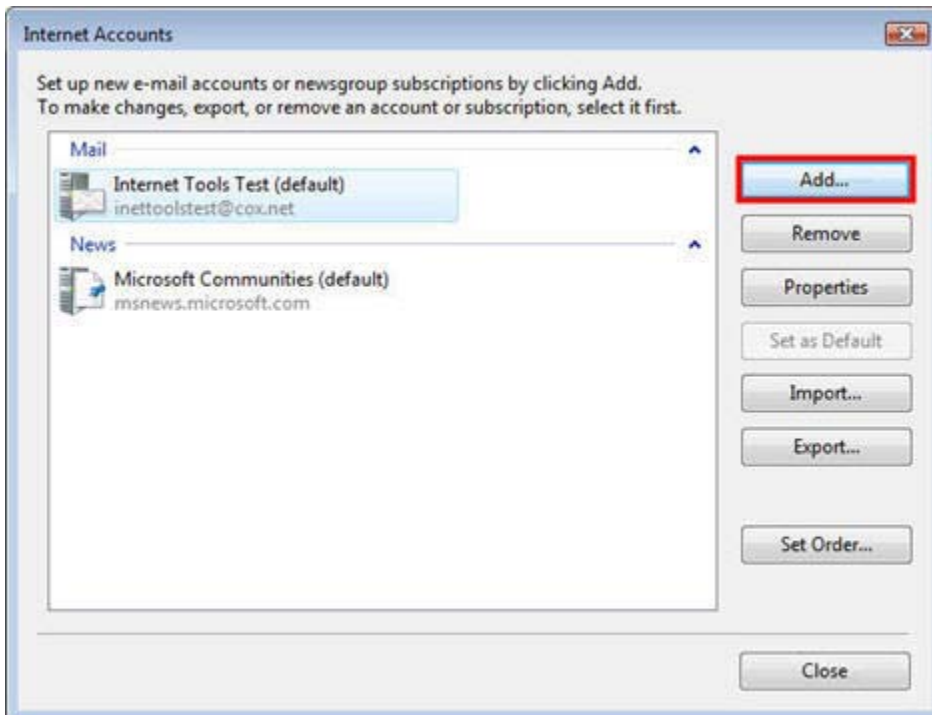


How to add additional email accounts using Windows Mail

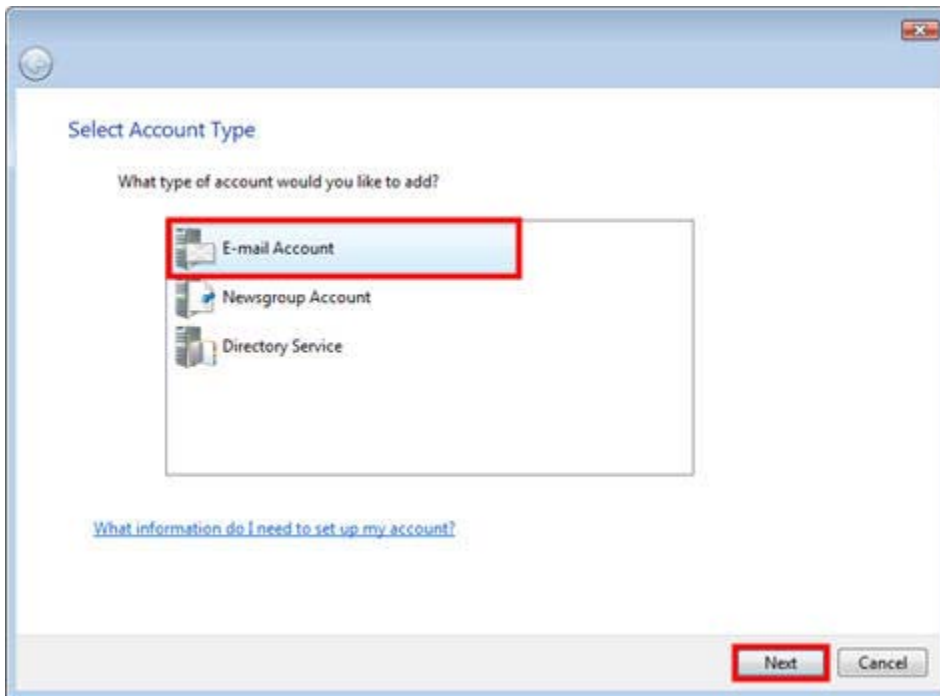
Step 1. Open Windows Mail and click **Tools**, then select **Accounts**.



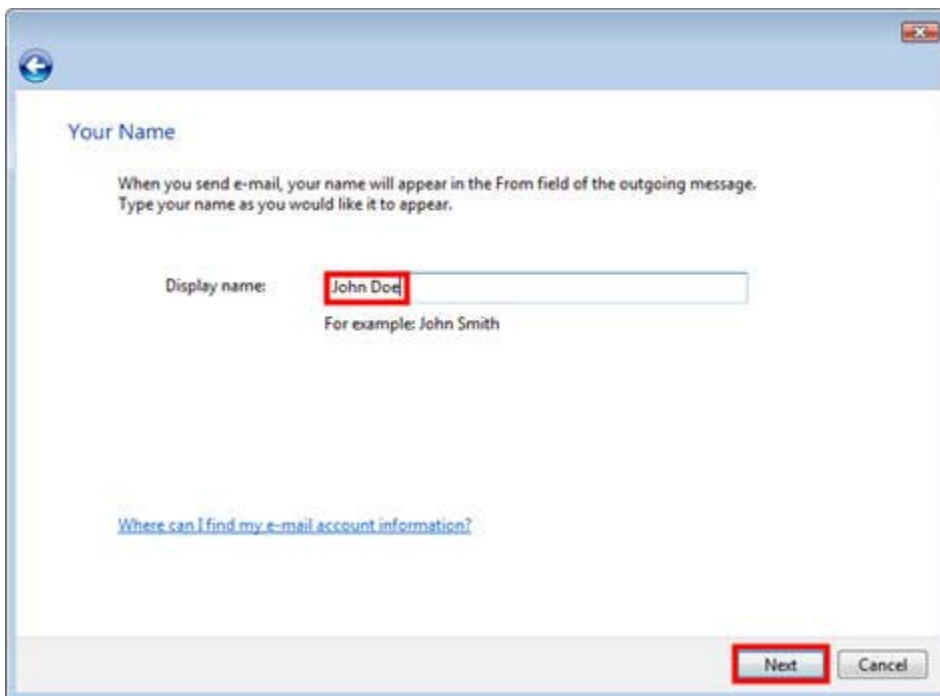
Step 2. In the **Internet Accounts** window, click **Add**.



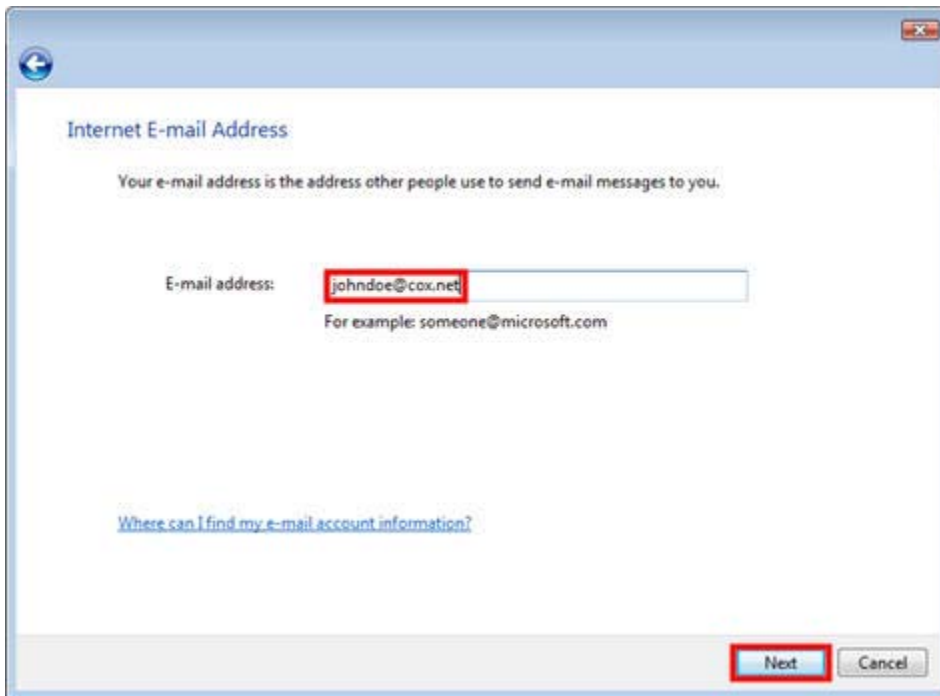
Step 3. Select **E-mail Account**, then click **Next**.



Step 4. Enter **Display name**, then click **Next**.



Step 5. Enter **E-mail address**, then click **Next**.



Internet E-mail Address

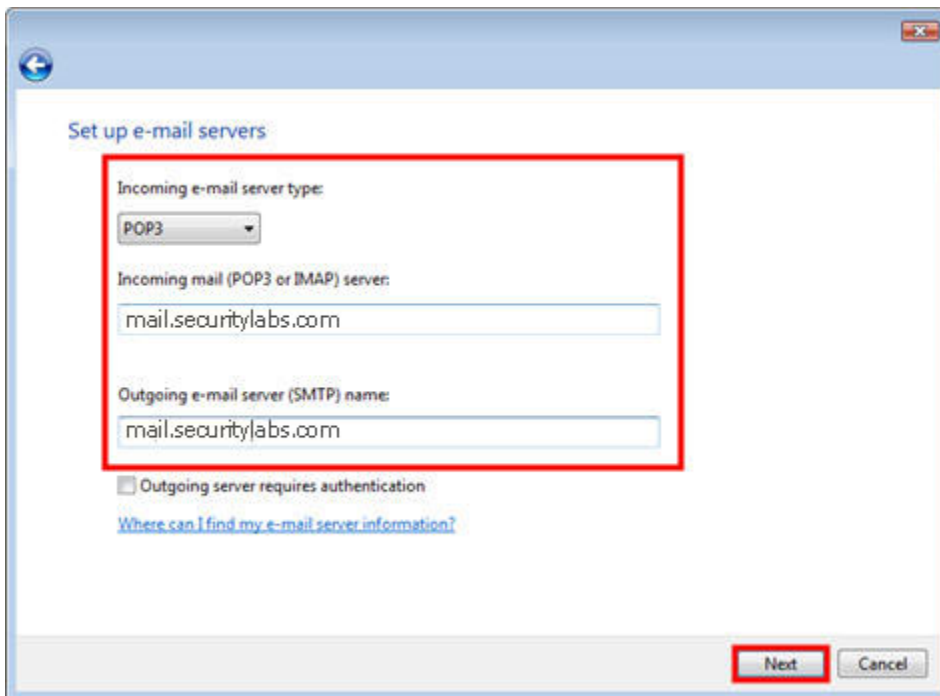
Your e-mail address is the address other people use to send e-mail messages to you.

E-mail address:

For example: someone@microsoft.com

[Where can I find my e-mail account information?](#)

Step 6. Select POP3 from the drop down menu. Enter the Incoming and Outgoing mail server locations to; mail.securitylabs.com. Make sure you check the box that says, "Outgoing server requires authentication".



Set up e-mail servers

Incoming e-mail server type:

Incoming mail (POP3 or IMAP) server:

Outgoing e-mail server (SMTP) name:

Outgoing server requires authentication

[Where can I find my e-mail server information?](#)

Step 7. Enter the E-mail username and password. Hit Next. Then hit Finish on the next screen.

Internet Mail Logon

Type the account name and password your Internet service provider has given you.

E-mail username: johndoe

Password: ●●●●●●●

Remember password

Next Cancel